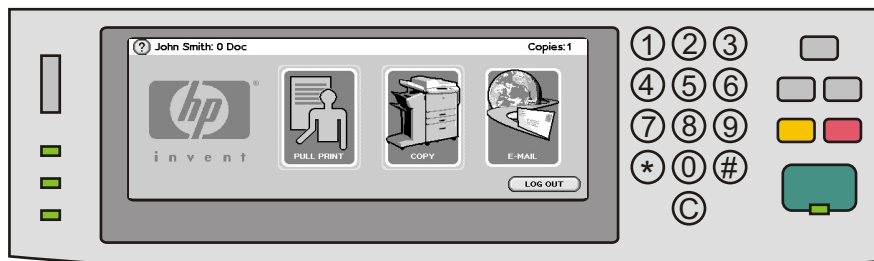


What are the benefits

- Internal solution for HP LaserJet printers
- Documents follow users to their choice of printer
- Controls user's access to printers and MFPs
- Tracks user's print, copy, scan, e-mail and fax activity
- Recovers print and copy costs by charging users or groups, either fully or partly
- Utilizes existing ID- card infrastructure
- Integrates with HP Digital Sending



Control panel of an HP LaserJet MFP with SafeCom Go Pull Print icon

The SafeCom Go product suite delivers clever printing solutions embedded into HP LaserJet printers. SafeCom Go helps organizations gain control over their print and copy costs. SafeCom Go also enables document security on workgroup printers.

The SafeCom Go product suite consist of the following products:

- **SafeCom Go**
SafeCom Go offers Pull Print and Copy Control. Documents follow users to their choice of printer. Pull Print turns cost-effective public workgroup printers into personal printers. SafeCom Tracking makes it possible to collect information about print, copy, scan, e-mail and fax usage for individuals or departments.
- **SafeCom Go Pay**
SafeCom Go Pay turns a printer or a multi function printer (MFP) into a revenue generator. In addition to the functions of SafeCom Go the pay solution makes it possible for educational institutions or others to charge users for print, copy, scan, e-mail and fax costs up-front.

SafeCom Go products offer several advantages compared to traditional external solutions:

- Cost effective with rapid return on investment.
- Connect to the printer's existing network connection. No need for additional network connections.
- User interface is integrated into the printer's menu structure.
- Utilizes existing ID-card infrastructure.
- Integrates with HP Digital Sending. SafeCom authenticates users before they are granted access to the functions offered by the HP Digital Sending technology, e.g. Send to E-mail, Scan to Folder and Fax.
- Compatible with external SafeCom solutions, allowing customers to offer same functionality across a wide range of printers.

Business Partner



SafeCom a/s
Tempovej 16
DK-2750 Ballerup
Denmark

Phone: +45 4436 0240
Fax: +45 4436 0248
E-mail: info@safecom.dk
Web: safecom.dk

Get ready, get set
go for clever printing

Identification Methods

- User code (1-10 digits)
- Magnetic Card (Track 2)
- EM41xx Proximity Card
- HID Proximity Card
- HITAG Proximity Card
- Indala Proximity Card
- Legic Proximity Card
- Mifare Proximity Card
- NEDAP Proximity Card
- TITAN Proximity Card
- UNIQUE Proximity Card

Please contact us to hear about other methods.

SafeCom Go ID Kit

Should you wish to use a card reader or another type of identification device SafeCom Go products with ID Kit are required. The identification device must be ordered separately.

The SafeCom Go ID Kit is supplied with a switch mode power supply (Input: 100-240V~, 50-60Hz/150mA, Output: 5V, 1.0A), a power split cable and allow the printer and the ID Kit to be powered from the one and same power socket.

System Requirements

Server

Windows XP, 2003 and 2000.
SafeCom License key code.
Recommended: 1GHz CPU and 512 MB RAM. 1 GB of free disk space.

Database

The free Microsoft SQL Desktop Engine (MSDE) is distributed with SafeCom. In a SafeCom G2 multi server installation the master server must run Microsoft SQL Server on either a Windows Server 2003 or a Windows 2000 Server.

Client

Windows XP, 2003, 2000, NT 4, 98 and clients running Citrix and Windows Terminal Service.
Recommended: 400 Mhz CPU and 256 MB RAM. 100 MB of free disk space.

Network protocol
TCP/IP.

Content

Qty.	Description
1	SafeCom CD with software and documentation.
1	SafeCom Go Flash Memory Card to be mounted in an empty Flash slot inside the printer.
1	SafeCom Go Administrator's Quick Guide D10701.

Printers

The internal SafeCom Go is available for these networked HP LaserJet printers with an empty Flash slot:

- HP LaserJet 2410
- HP LaserJet 2420
- HP LaserJet 2430
- HP LaserJet 4250
- HP LaserJet 4345mfp (*1)
- HP LaserJet 4350
- HP Color LaserJet 4650
- HP Color LaserJet 4700
- HP Color LaserJet 4730mfp(*1)
- HP Color LaserJet 5550
- HP LaserJet 9040mfp (*1)
- HP LaserJet 9050 (*2)
- HP LaserJet 9050mfp (*1)
- HP Color LaserJet 9500mfp (*1)

User interfaces are integrated into the menu structure of HP printers.

Other printers are supported by external SafeCom equipment that connects to the printer's network or parallel port.

Tip: Refer to the *SafeCom Go DIMM data sheet* if your HP LaserJet is an older DIMM based model.

(*1) Features a built-in numeric keypad which allows user identification by means of a numeric code.

(*2) Identification with user code and/or PIN code is possible, but a press on the **Down** button to get **Enter** is required to signal that the complete user code has been entered.

Part Number	Product Name	Description
SafeCom Go		
922 010 GO	SafeCom Go	Pull print and copy control solution. Tracking requires SafeCom Tracking (p/n 933 990) on the server.
923 011 GO	SafeCom Go with ID kit	Same as above, but with ID kit.
SafeCom Go Pay		
922 010 PAY	SafeCom Go Pay	Pull print and copy control solution where users are charged up-front. Requires SafeCom Pay (p/n 935 990) on the server.
923 011 PAY	SafeCom Go Pay with ID kit	Same as above, but with ID kit.
SafeCom Go Copy		
924 010	SafeCom Go Copy	Copy control solution. Tracking requires SafeCom Tracking (p/n 933 990) on the server.
925 011	SafeCom Go Copy with ID kit	Same as above, but with ID kit.
SafeCom Identification Devices		
954 010	SafeCom Magnetic Card Reader (Track 2)	
974 010	SafeCom EM Reader (EM41xx, UNIQUE, TITAN, and Hitag 1/2/S Reader)	
973 010	SafeCom HID Reader	
670 010	SafeCom Indala Reader	
979 010	SafeCom Legic Reader	
970 990	SafeCom Mifare Reader	
978 990	SafeCom NEDAP Reader	