



control and audit your printing costs

JetCAPS MegaTrack gathers, evaluates and presents the information you need to control printing costs.

Whether you are managing an installed printer base, or planning a printer implementation, knowing your printing costs is the essential first step to maximizing the return on your printer investment and minimizing the total cost of printer ownership. However the flexibility of distribution and usage that contributes to an effective workflow makes it difficult to track who is printing what, not to mention where, when and why. And, even if you manage to gather the information you still have the trouble of consolidating the figures to get a meaningful picture that you can use for further decisions.

JetCAPS MegaTrack monitors printers connected to local and remote print servers to provide you with comprehensive real-time and statistical information on usage and costs – broken down according to the department, cost-center, group or even employee or printer – to help you optimize printer deployment, workload and the purchase of printer consumables.

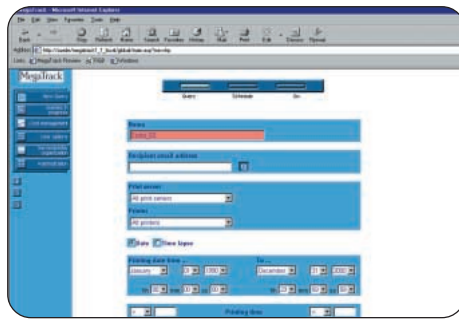
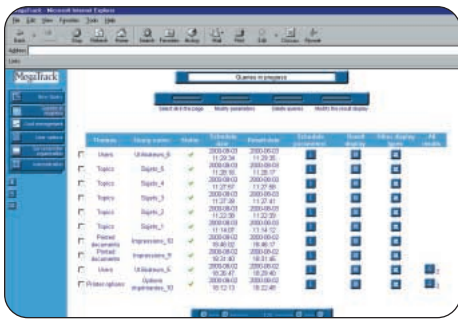
how JetCAPS MegaTrack works

The JetCAPS MegaTrack print-server (MPS) monitors the printers attached to as many local and remote Windows NT/2000 and XP print-servers as necessary. It scans the print jobs and queries the printer to compile detailed information on printer usage. By analyzing this information MPS calculates a cost per page based on a detailed printer profile that includes toner and media cost, depreciation and a host of other factors. The result is accurate information for each print job (color, duplex mode, economode ...).

The central JetCAPS MegaTrack database-server (MDS) consolidates the information collected at the individual print-servers. Then JetCAPS MegaTrack web-server software (MWS) prepares detailed, customized reports, combining graphics and text that show you the composition of your printing costs. These statistics and reports can be accessed and administered from anywhere in your organisation, using a web-browser. They can also be exported into MS Excel with only one click, or automatically sent by e-mail.



Printed on an HP Color LaserJet Printer



characteristics

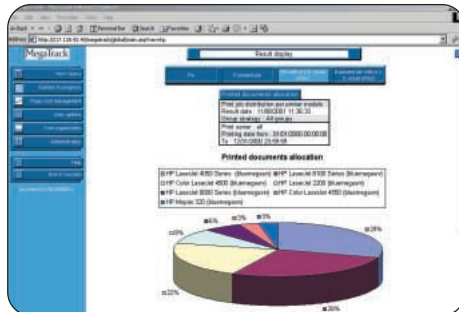
- monitors, tracks and reports all network printer activity (Postscript and PCL)
- accurate document and pages information (media type and size, duplex, economode, color or monochrome ...) for a finely tuned cost per document and detailed user/printer information
- detailed cost analysis (for example, number of monochrome pages in a color document ...)
- captures network hp LaserJet/MFP printer + CreditJet/MFP walk-up copy activity
- designed to work in medium and multinational companies – featuring web-based management and reporting, for access across the intranet/extranet/internet
- features more than 180 built-in reports about cost, users, devices and documents
- scheduled report generation, automatic results sent via email, single click export to Excel
- detects printers automatically, all you need to do is assign the cost profiles for each printer
- tracking and reporting is totally transparent to users and requires no client/workstation applications

areas of application

JetCAPS MegaTrack is the easy way to monitor, allocate, and ultimately, optimize your printing costs. By monitoring print-servers it provides you with comprehensive real-time and statistical information on printer usage and the cost of printing – by domains, groups, employees or printers.

special features

- multi-currency management
- multi-language interface and reports in english, french, german, spanish, czech, russian, polish and dutch
- billing/allocation code pop-up window for local printer tracking for NT/2000/XP workstations
- distributed architecture for a fully scalable solution on multiple NT/2000/XP print-servers covering an unlimited number of printers with negligible effects on printing speed and LAN bandwidth
- Macintosh workstation support (TCP/IP)



ordering information

JetCAPS MegaTrack Pro and JetCAPS MegaTrack Lite include three modules. The following features, included as standard in JetCAPS MegaTrack Pro, can be ordered separately for JetCAPS MegaTrack Lite: automatic email reports; more than 180 built-in reports; SNMP support; media cost and printer templates.

- JetCAPS MegaTrack Print-Server
Minimum Requirements
Pentium II 400MHz, 128MB RAM, 512MB free hard disk space. Windows NT 4.0 SP4 or higher, or Windows 2000 or XP.
- JetCAPS MegaTrack Database-Server and Web-Server
Minimum Requirements
Pentium III 500MHz, 256MB RAM, 1536MB free hard disk space. Windows NT 4.0 SP4 or higher, Windows 2000 or XP. Internet Explorer 4 SP2 or higher. Office 97, 2000 or XP. IIS 4 or higher, SQL Server 7.0/2000 or MSDE database (MSDE is included on MegaTrack CD).

JetCAPS MegaTrack print-server, database-server and web-server can all run on the same computer.

For further information please contact your local JetCAPS Partner at <http://www.jetcaps.com/partners.htm>



Some of the products mentioned in this brochure are developed by third-party companies – in most cases, in close co-operation with HP. The third-party company that provided the specifications and descriptions in this document, is responsible for the performance of these third-party products. All agreements, warranties or understandings take place between the respective vendors and the purchaser. All designations and product names are trademarks or registered trademarks of the respective company. This document is non-contractual. Specifications and descriptions of products can be modified at any time without prior notice. © Hewlett-Packard Company and Bluemega, Boulogne, France 2002 Design by B.O.L.A.Y. GmbH, Germany January 23, 2002/ds_megatrack